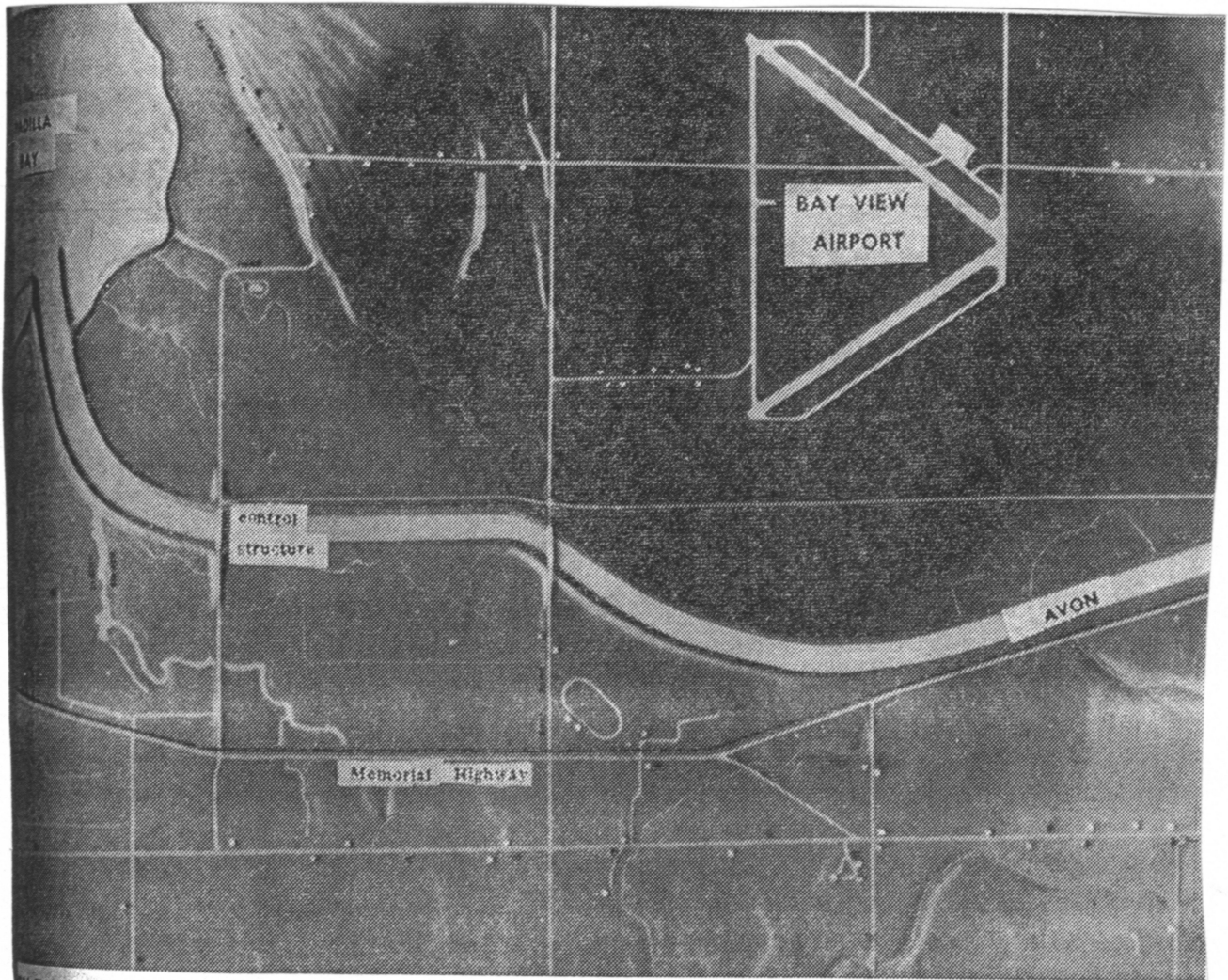


Protection from floods is seen in this scale model of project

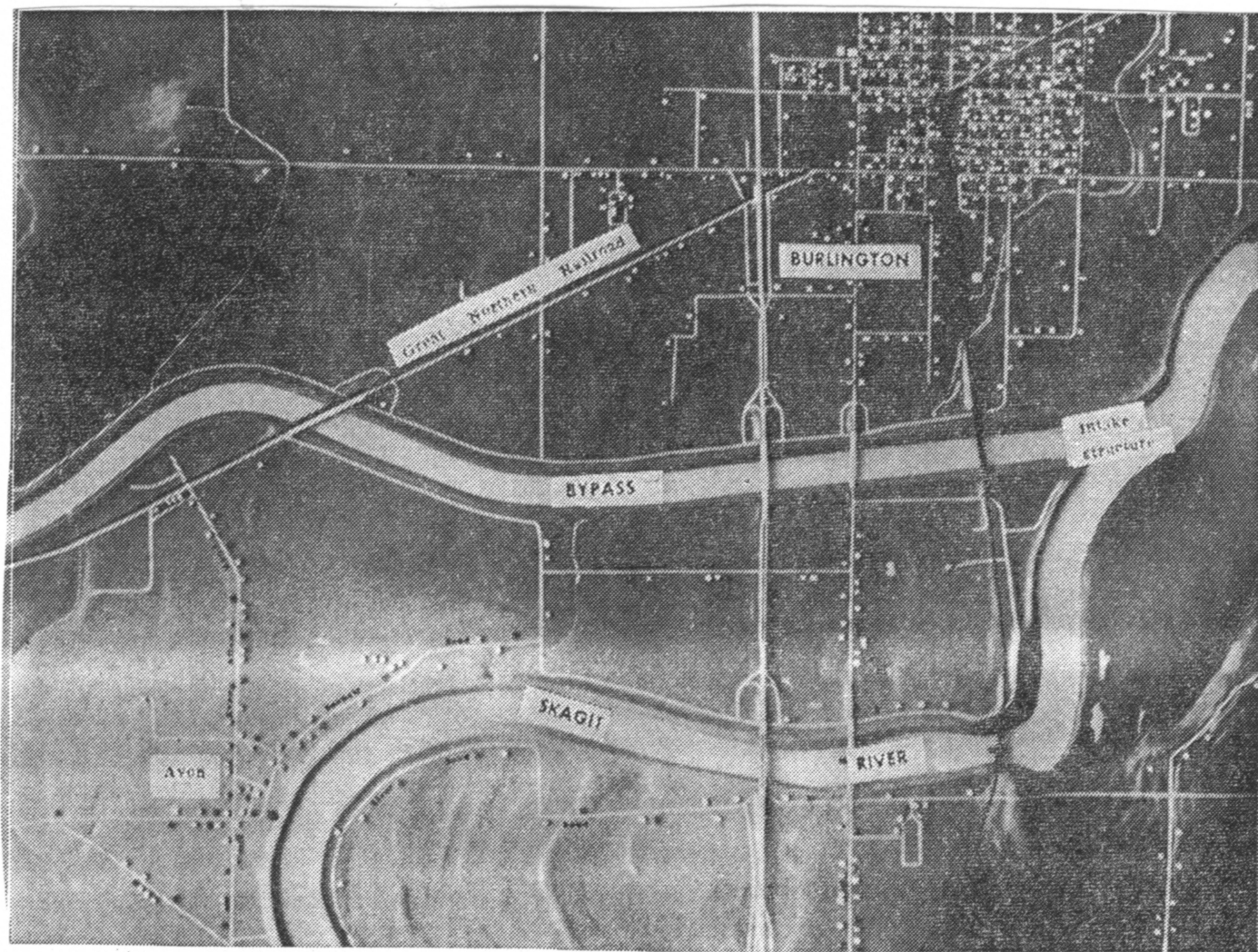


AVON BYPASS — Skagit County engineers are displaying this contour model of the proposed \$30,000,

000 flood control project. Construction of the Avon Bypass from the Skagit River south of Burlington

SKAGIT VALLEY HERALD

MAY 15, 1964



and levee improvements would offer protection from floods carrying up to 180,000 cubic feet of

water per second, according to the Seattle District Corps of engineers. Model is available for display.